

# Installation instruction do88 performance air filter housing Volvo C30/V50/S40 2004-2013

Part number: LF-130-V50

This instruction shows how to replace the OEM turbo intake pipe with do88 performance intake pipe.

At this type of installation we always recommend that you have mechanical experience and knowledge about safety during work on vehicles.

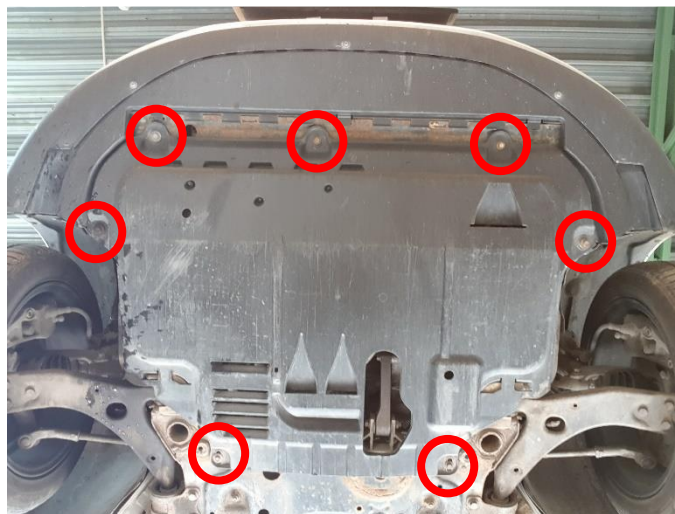
## Parts included:

1. Upper half of the air filter housing
2. Lower half of the air filter housing
3. Bracket for the air filter housing
4. Bracket for the air filter housing
5. Bracket for the ECU
6. Performance air filter
7. 2 ¼" (57mm) Air ducting (1m)
8. 3" (76mm) Air ducting (0,4m)
9. Wire hose clamps (3pcs, 2pcs shown in picture)
10. MAF gasket
11. Zip-tie
12. M5x20 screws (2pcs)
13. M5x25 screws (3pcs)
14. M5x30 screws (5pcs)
15. M5 Nuts 10pcs
16. Self tapping screw (not in picture)

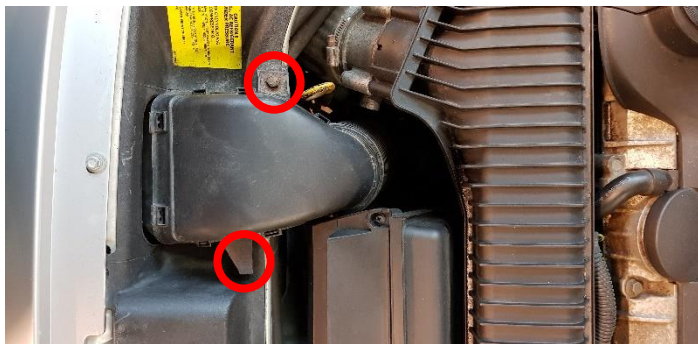


1. Disconnect the battery.

2. Remove the plastic cover underneath the engine  
7pcs Hex 10mm Screws.



3. Remove the air filter housing inlet pipe (all three parts of it). 2x Hex 10mm screws.



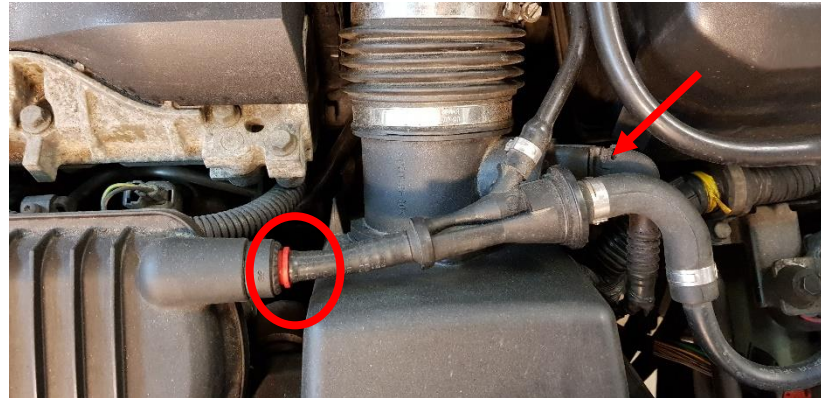
4. Remove the plastic ECU lid. Pull it straight up.



5. Gently disconnect the both ECU cable connectors. Press the black plastic tab and pull the red lever backwards.



6. Disconnect the vacuum line from the intake manifold. Press the red plastic ring and pull out the hose. Also disconnect the MAF cable connector.



7. Loosen the MAF hose clamp and pull of the hose from its connection.



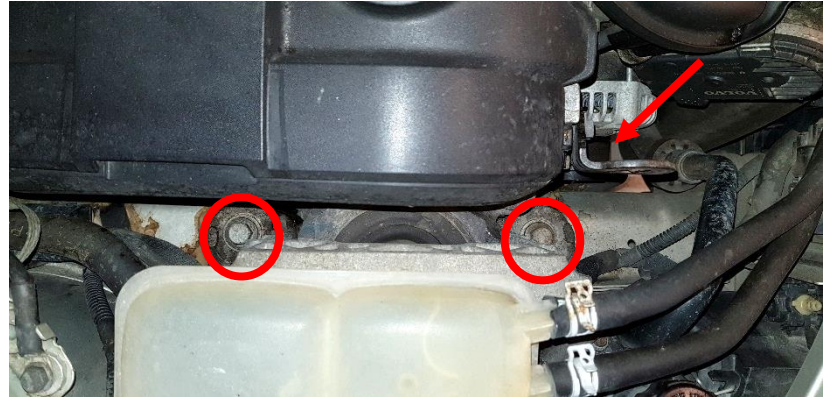
8. Remove 1x Torx T30 screw on the back side of the air filter housing.



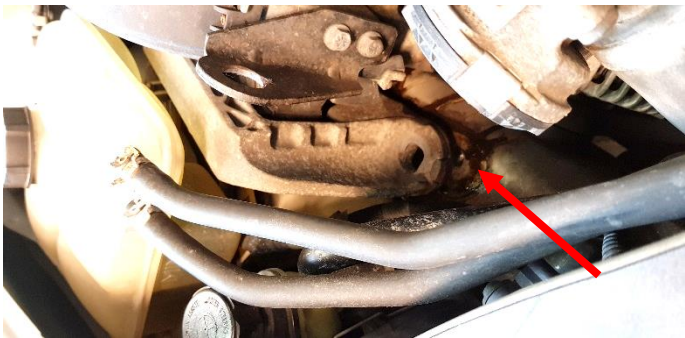
9. Place a floor jack under the engine sump with a block of wood in-between them. Raise the floor jack until it ONLY supports the engine (don't lift it).



10. Remove 2x Hex 15mm screws for the right-hand side engine bracket.



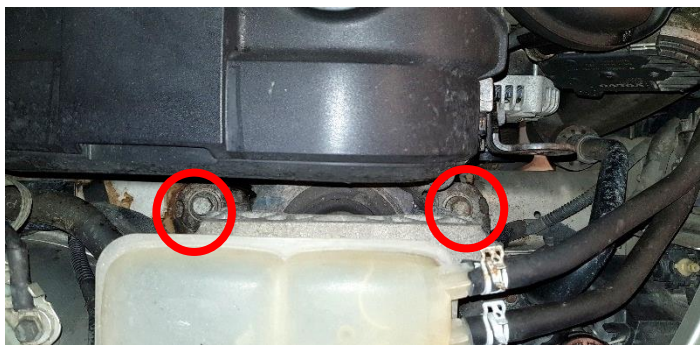
11. Now gently lift the engine about 20mm with the floor jack. You can clearly see how much you have raised the engine at the engine bracket.



12. Now you should have enough space so you can lift the air filter housing out from its four rubber grommets and slide out from the engine bay as on the photo below.



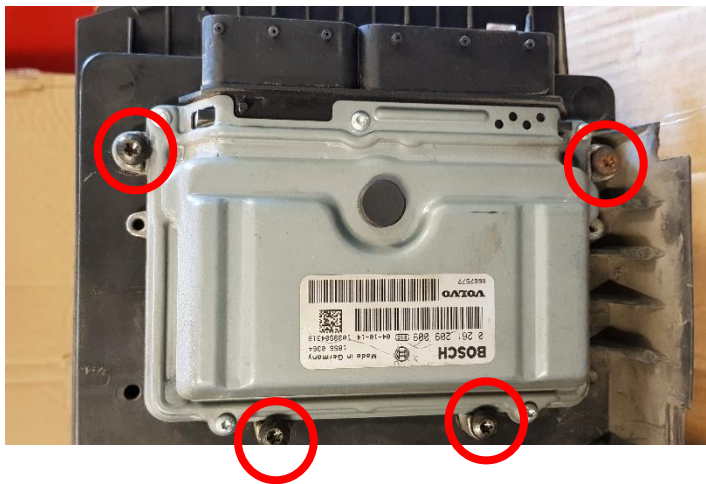
- 13.** Now lower the engine back to its normal position. Align the engine to its correct position using the dirt markings on the engine bracket. Re-install the 2x Hex 15mm screws that you removed in step 10.



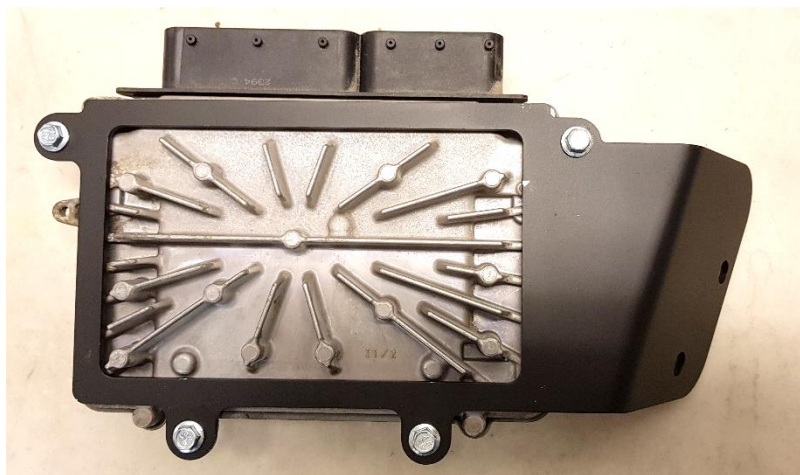
- 14.** Remove 1x Hex 10mm screw near the left side head light.



- 15.** Remove the ECU and MAF from the air filter housing. ECU has 4x Torx T30 and the MAF has 2x Torx T25 screws.



- 16.** Fasten the ECU to the included bracket as on the photo below. Use the included 4x M5X20 screws and 4xM5 Nuts.



## 17.

Now it is time to assemble the do88 air filter housing.

1. Put the air filter into the bottom part of the air filter housing according to the photo.
2. Put the top and bottom halves of the air box to each other in the direction shown on the photo.
3. Fasten the air filter housing halves and the two brackets as shown on the photo. Use the included M5x25 screws and M5 nuts where it is no bracket and the M5x30 screws and M5 nuts where bracket is located. Tighten the screws gently, if you overtight them you will damage the plastic housing.
4. Install the MAF sensor as on the photo with the included gasket and M5x20 screws and M5 nuts (first remove the OEM gasket from the MAF sensor).
5. Fasten the 3" (76mm) and 2 1/4 " (57mm) air ducting hoses with the included hose clamps onto their connections on the air filter housing.

17.1



17.2



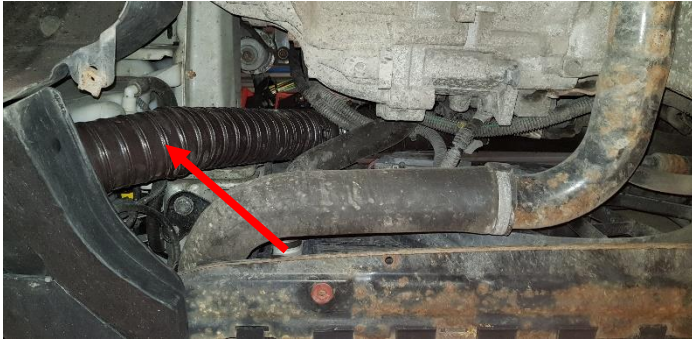
17.3



17.4



- 18.** Now install the do88 air filter housing into the car while you jiggle the 2 ¼" (57mm) air ducting down to the left side fog light area.



- 19.** Fasten the 2 ¼" (57mm) air ducting with the included Zip-ties. Underneath the windshield washer reservoir tank. Make sure the hose end have a distance to any plastic at least 57mm away so the air flow won't be restricted.

- 20.** Re-install the plastic cover underneath the engine removed in step 2.

- 21.** Fasten the 3" (76mm) air ducting hose to the OEM air inlet "snorkel". "Screw" the snorkel into the air ducting and fasten it with the included wire hose clamp. Fasten the snorkel with the OEM screws.



- 22.** Now fasten the ECU bracket with the same screw you removed in step 14. But do it underneath the plastic!



23. Turn the ECU bracket into a position until you have clearance for the air filter housing and the plastic tab shown on the photo.



24. Now fasten the ECU bracket in the 2<sup>nd</sup> screw hole with the self tapping screw that is included (Bits Phillips Nr2). Use a battery screwdriver.



25. Now remove the screw you installed in step 22 and then fold down the plastic. And now fasten this screw on top of the plastic again.



26. Reconnect the ECU cable connector, MAF cable connector, intake manifold vacuum hose, MAF hose clamp and finally reconnect the battery.  
You are now finished!

