

1.

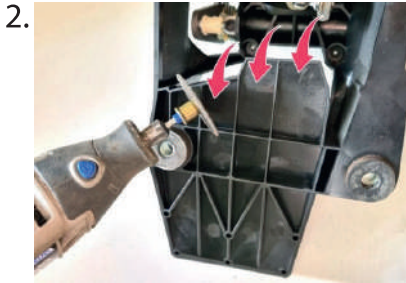
INSTALLATION INSTRUCTIONS - SAAB 93 short shifter



1. Remove lever console from your car



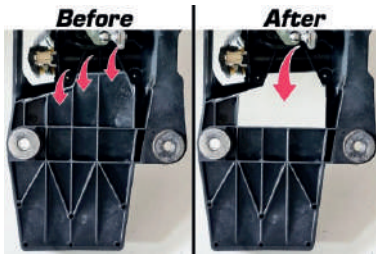
6. Remove the handle



2. Cut off those 3 plastic elements from lever console (you can use dremel)



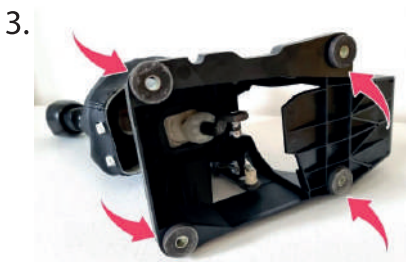
That's how it should look like after remove



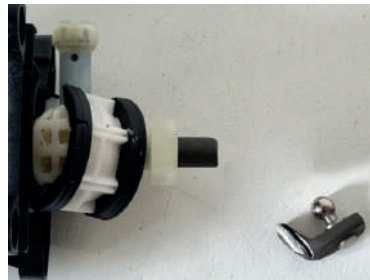
After cutting there should not be those 3 plastic elements



7. Cut the shifter along the line



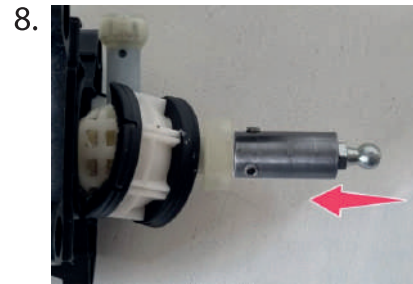
3. Remove those 4 rubber bushings



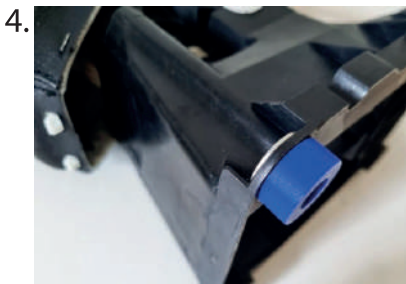
The cut should be at the point where the curvature of the bar ends



The best way is to use screwdriver



8. Slip the new end on the base of the shifter & screw 2 screws.



4. Put metal bushing into the plastic washers from short shifter kit (for a better hold metal bushing to plastic washer you can use super glue)



9. Reinstall the shifter assy into the car



5. Unscrew those 4 screws

2. Adjusting the shift cables

In some cases you should adjust the shift cables to make short shifter works properly.

- 

1. Place gear stick in neutral position
- 

2. Find gear selector on the right side of the engine
- 

That's gear selector
- 

3. Pull up gear selector by pushing shift cable holder & place some tube (diameter 4.5-5mm) into 2 selector holes
- 

4. Put tube simultaneously into both holes of the selector
- 

5. Remove the side cover
- 

6. Insert small screwdriver into first shift cable lock and gently twist
- 

7. Pull up gear stick plastic part and simultaneously press by small screwdriver plastic latch
- 

8. Spring should go down. Make sure that white plastic part is lowered into left side hole
- 

9. Lock the 2 shift cable locks that you unlocked before
- 

10. Pull out tube from the gear selector
- 

11. Pull up gear stick to make spring lock
- 

12. You are ready to go.