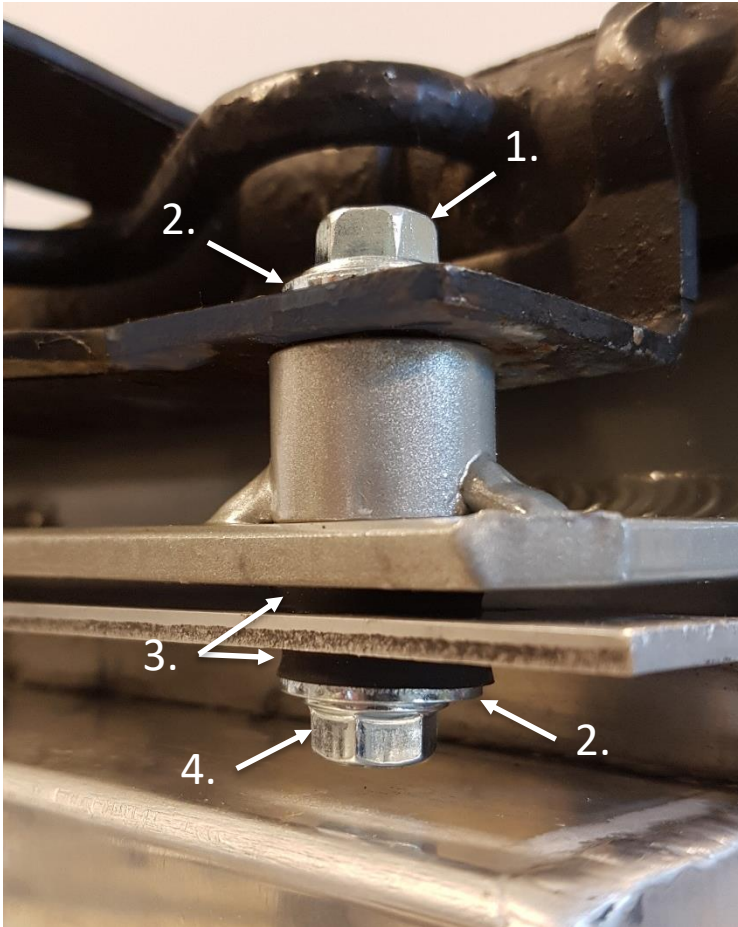


Important installation information for do88 aluminum radiator together with aluminum intercooler.



When do88 aluminum radiator is installed together with aluminum intercooler the supplied screw, two washers, two rubber washers and lock nut have to be used according to this picture.

It's necessary to do this to allow some movement in the joint between radiator and intercooler if not installed according to this it may void warranty.

Parts list for each corner of radiator, position according to picture:

1. Flange screw M6x40
2. M6 flat washer 2 pcs
3. M6 rubber washer 2 pcs
4. M6 lock nut
5. Thread locker (not on picture) use between nut and screw.

The nut should only be tightened until the rubber washers starts to be compressed!